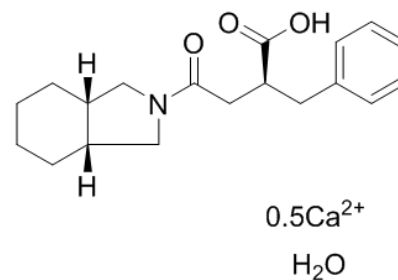


Product Name : Mitiglinide calcium hydrate
Cat. No. : PC-46826
CAS No. : 207844-01-7
Molecular Formula : $C_{19}H_{25}NO_3 \cdot \frac{1}{2} Ca \cdot H_2O$
Molecular Weight : 353.46
Target : Potassium Channel
Solubility : 10 mM in DMSO



Biological Activity

An insulin secretion stimulator by closing the ATP-sensitive potassium KATP channels in pancreatic β cells; has potent hypoglycemic effects.

Diabetes
Approved

References

- Ohnota H, et al. J Pharmacol Exp Ther. 1994 May;269(2):489-95.
Ohnota H, et al. Biochem Pharmacol. 1995 Jan 18;49(2):165-71.
Kinukawa M, et al. Br J Pharmacol. 1996 Apr;117(8):1702-6.

Caution: Product has not been fully validated for medical applications. Lab Use Only!

E-mail: tech@probechem.com